

The Hyannisport Theater

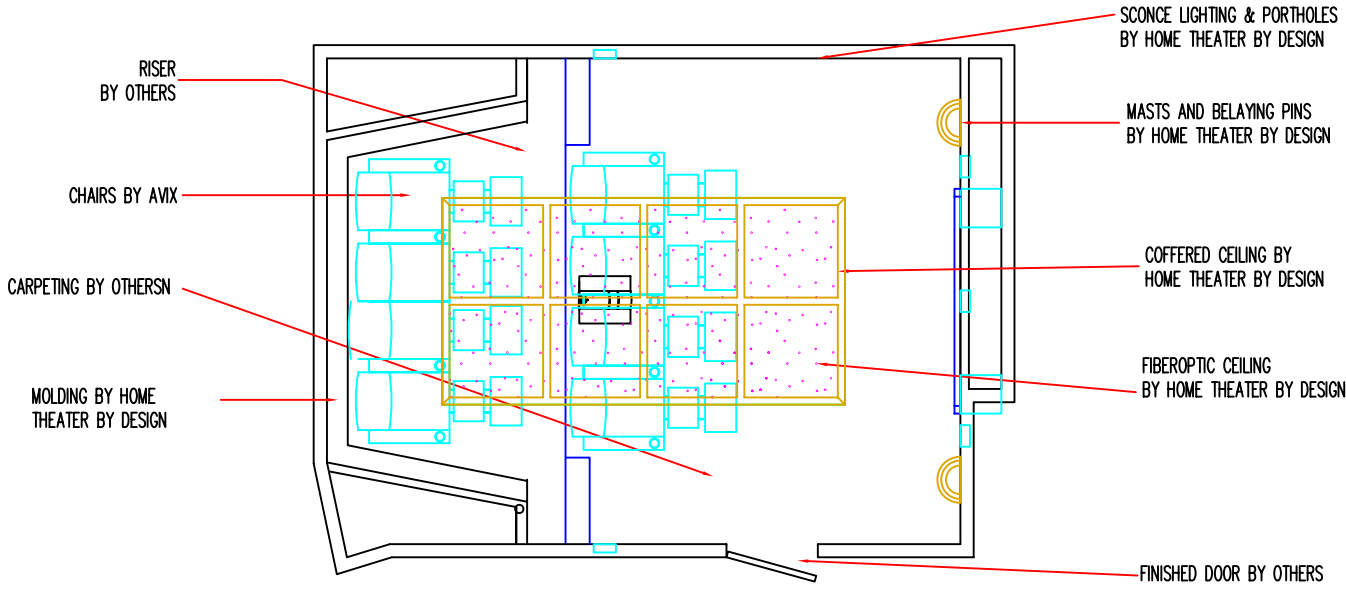
Home Theater *by Design*

REVISIONS	DATE	BY
GENERAL		

The Hyannisport Theater

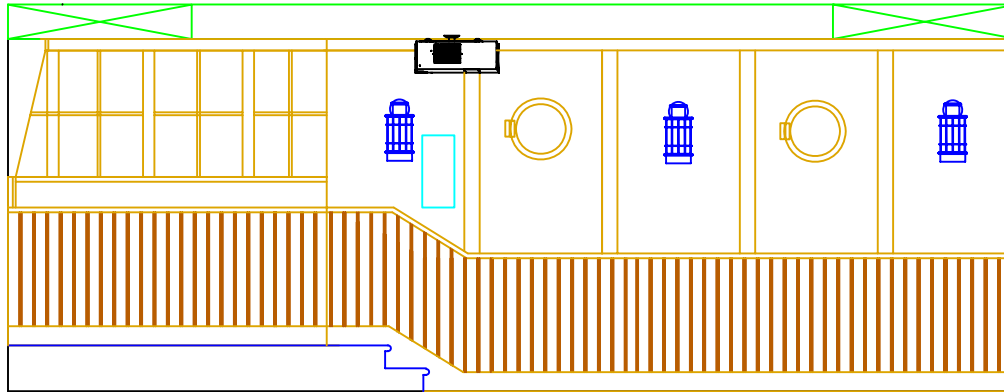
Home Theater by Design

DATE:	01/10/07
DRAWN BY:	RPS
SCALE:	3/4" = 1'-0"
SHEET DESCRIPTION	
DESIGN INFO PLAN	
SHEET NO.	
DI- 1	

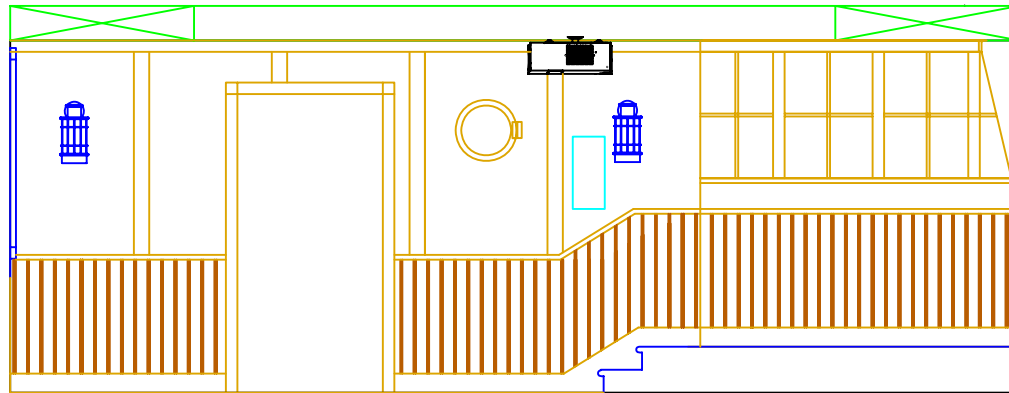


EQUIPMENT LEGEND				
NAME	BRAND	MODEL	DIMENSIONS (W x H x D)	QTY.
FRONT LEFT (FL)	BAY AUDIO	PTM/ONE IN-WALL	8 3/8"W x 18 5/8"H x 4"D	1
FRONT RIGHT (FR)	BAY AUDIO	PTM/ONE IN-WALL	8 3/8"W x 18 5/8"H x 4"D	1
CENTER (CC)	BAY AUDIO	PTM/ONE IN-WALL	8 3/8"W x 18 5/8"H x 4"D	1
SUBWOOFER (SUB)	BAY AUDIO	JAM SUB II	16" W x 19 1/2" D x 17"D	1
LEFT SIDE (LS)	BAY AUDIO	970 IN-WALL	9 1/4"W x 20 3/8"H x 3 1/2"D	1
RIGHT SIDE (RS)	BAY AUDIO	970 IN-WALL	9 1/4"W x 20 3/8"H x 3 1/2"D	1
LEFT REAR (RR)	BAY AUDIO	970 IN-WALL	9 1/4"W x 20 3/8"H x 3 1/2"D	1
RIGHT REAR (RR)	BAY AUDIO	970 IN-WALL	9 1/4"W x 20 3/8"H x 3 1/2"D	1
PROJECTOR	RUNCO	CL-810 ULTRA		1
SCREEN	STEWART	SNDI00H	49" x 87" (100" DIAG.)	1

FINISHED CEILING 8' -5"
 BOTTOM OF SOFFIT 7' -8"
 TOP OF CHAIR RAIL 4' -0"
 RISER 1' -0"
 FINISHED FLOOR 0' -0"



FINISHED CEILING 8' -5"
 BOTTOM OF SOFFIT 7' -8"
 TOP OF CHAIR RAIL 3' -0"
 FINISHED FLOOR 0' -0"



REVISIONS	DATE	BY
GENERAL		

The Hyannisport Theater

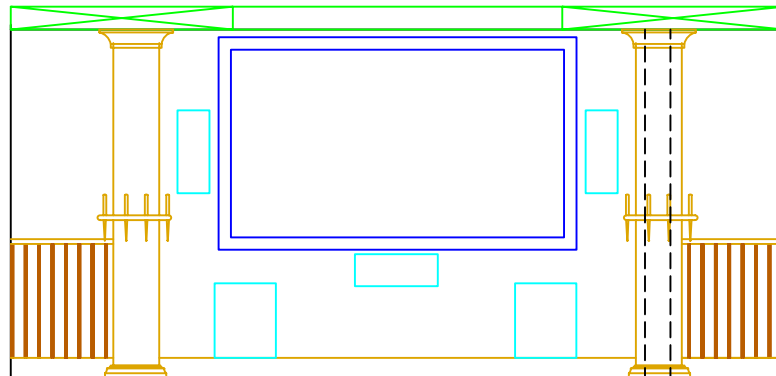
Home Theater by Design

DATE:	01/10/07
DRAWN BY:	RPS
SCALE:	3/4" = 1'-0"
SHEET DESCRIPTION	
ELEVATIONS	
SHEET NO.	
IE - I	

TOP OF SCREEN (2) 7'-6"

BOTTOM OF SCREEN 2' -10 1/2"

FINISHED FLOOR 0'-0"



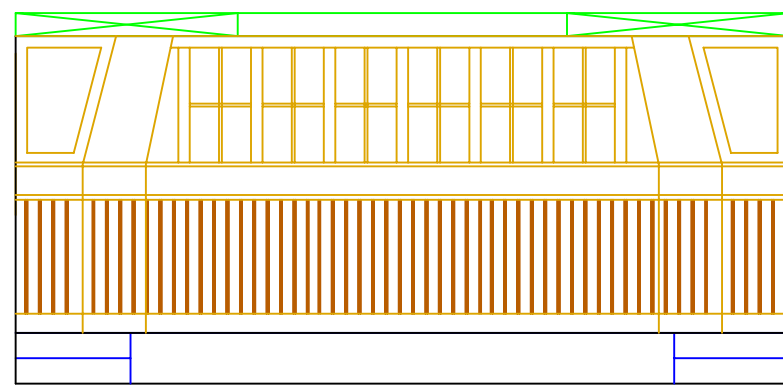
FINISHED CEILING 8' -3/4"
BOTTOM OF SOFFIT 7' -6 3/4"

ANGLE OF WALL 4' -9 1/4"

TOP OF CHAIR RAIL 4' -1 1/4"

RISER 1' -1 1/4"

FINISHED FLOOR 0'-0"

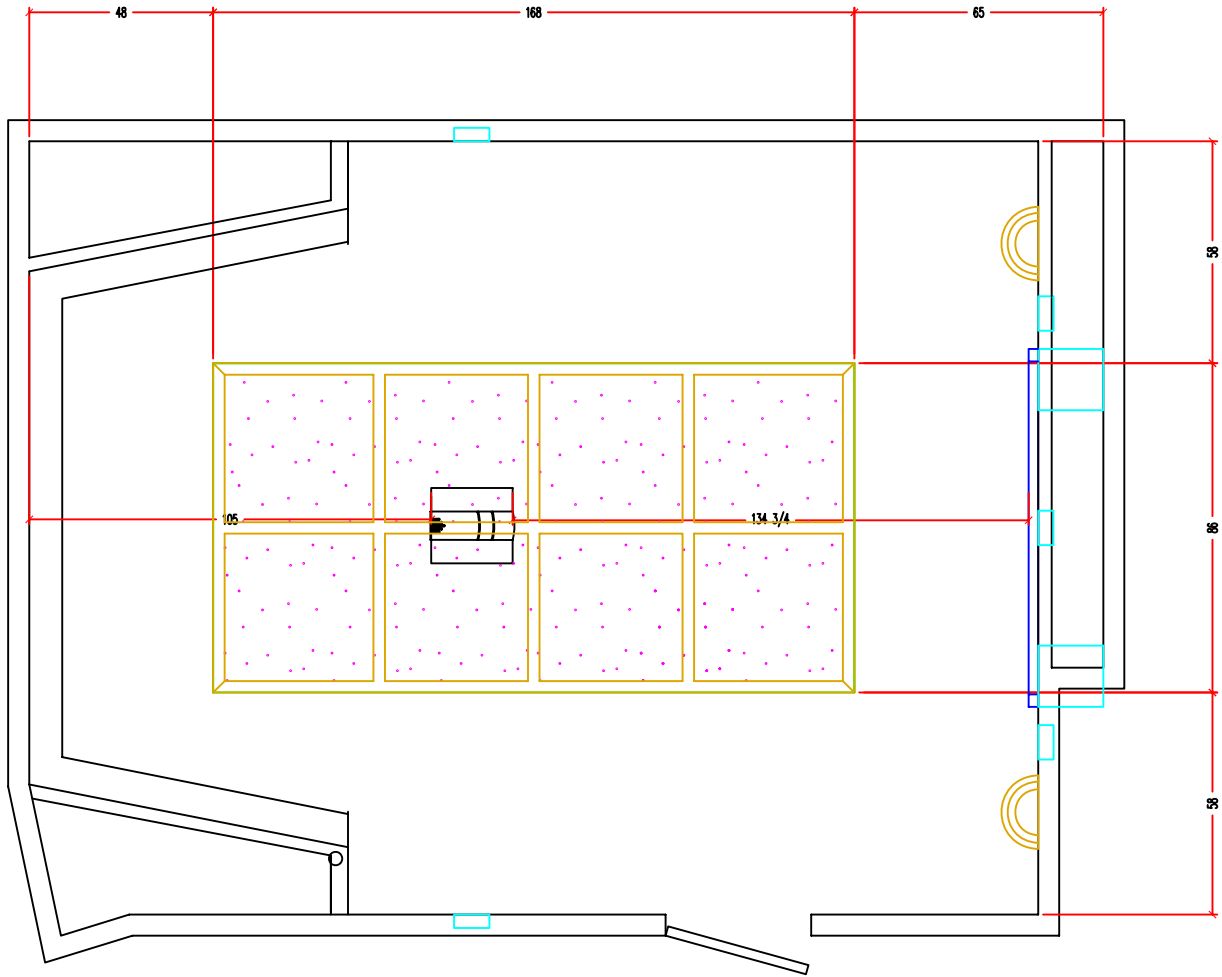


REVISIONS	DATE	BY
GENERAL		

The Hyannisport Theater

Home Theater by Design

DATE:	01/10/07
DRAWN BY:	RPS
SCALE:	3/4" = 1'-0"
SHEET DESCRIPTION	
ELEVATIONS	
SHEET NO.	
IE - 2	



REVISIONS	DATE	BY
GENERAL		

The Hyannisport Theater

Home Theater by Design

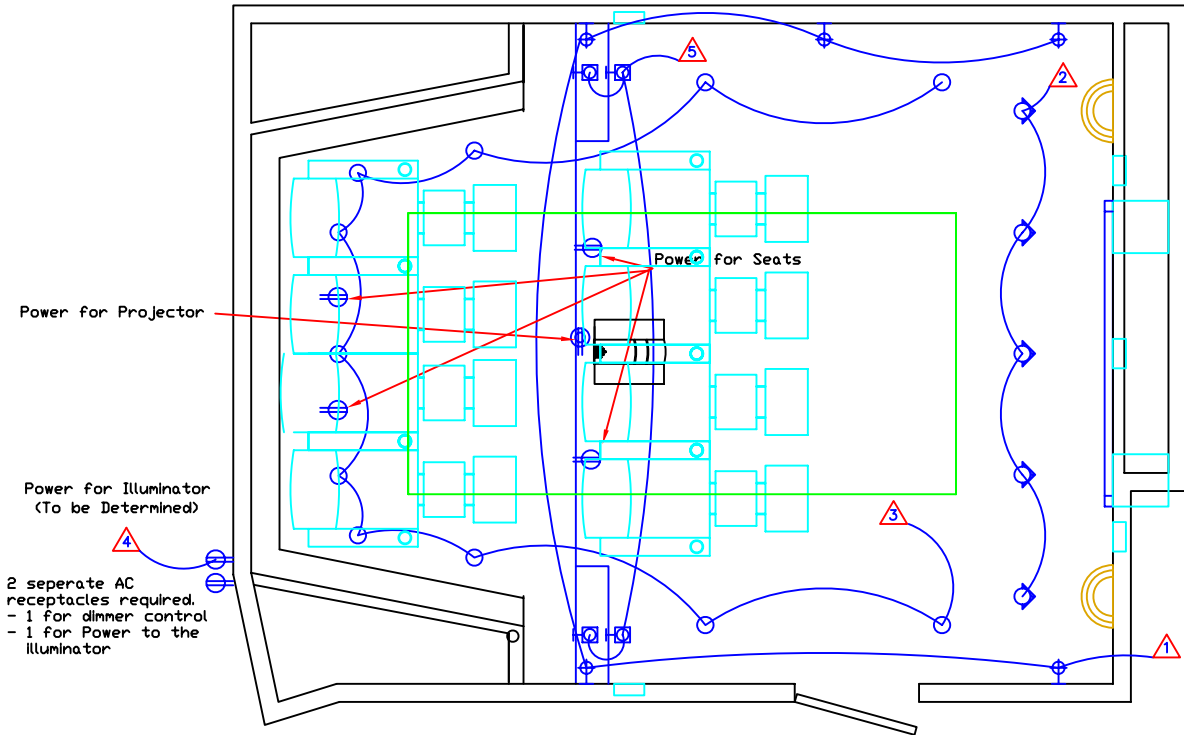
DATE:	01/10/07
DRAWN BY:	RPS
SCALE:	3/4" = 1'-0"
SHEET DESCRIPTION	
CEILING PLAN	
SHEET NO.	
CE - I	

REVISIONS	DATE	BY
GENERAL		

The Hyannisport Theater

Home Theater by Design

DATE:	01/10/07
DRAWN BY:	RFS
SCALE:	1/2" = 1'-0"
SHEET DESCRIPTION	
ELECTRICAL PLAN	
SHEET NO.	
EL - 2	



Power for Projector

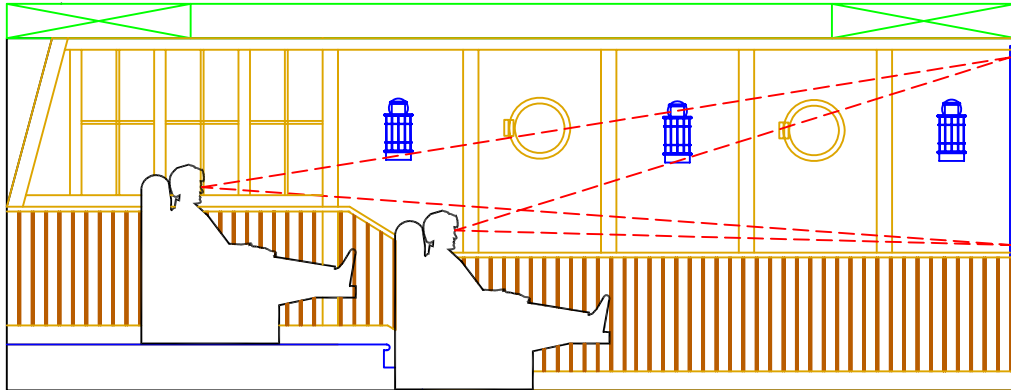
Power for Illuminator
(To be Determined)

2 separate AC
receptacles required.
- 1 for dimmer control
- 1 for Power to the
Illuminator

Power for Seats

ELECTRICAL LEGEND	
SYB.	DESC.
⊕	ELECTRICAL OUTLET
⊕	ELECTRICAL OUTLET NPL. ON CEILING
○	RECESSED LIGHTS
⊕	WALL WASHER LIGHTS
⊕	SCONCE LIGHT
⊕	STEP LIGHT
⊕	TELEPHONE JACK
○	PROGRAMMABLE HOPE LIGHTS

- ZONE:**
- ⊕ SCONCE LIGHTS
 - ⊕ WALL WASHERS & ENTRY DOOR LIGHT
 - ⊕ GENERAL DOWN LIGHTS
 - ⊕ FIBER OPTIC ILLUMINATOR
 - ⊕ STEP LIGHTS

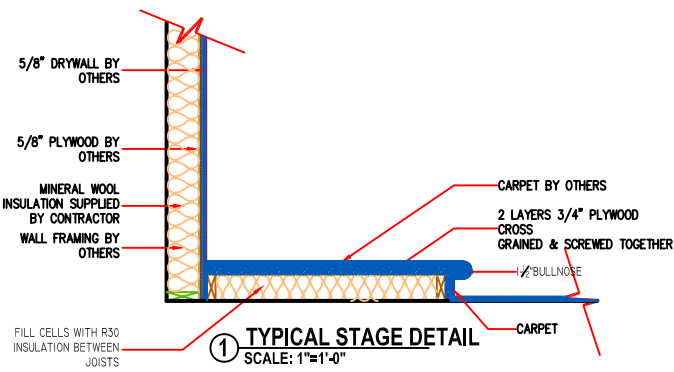


REVISIONS	DATE	BY
GENERAL		

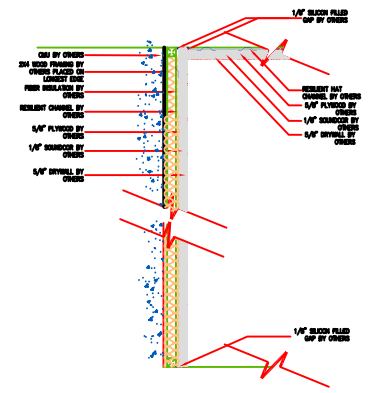
The Hyannisport Theater

Home Theater by Design

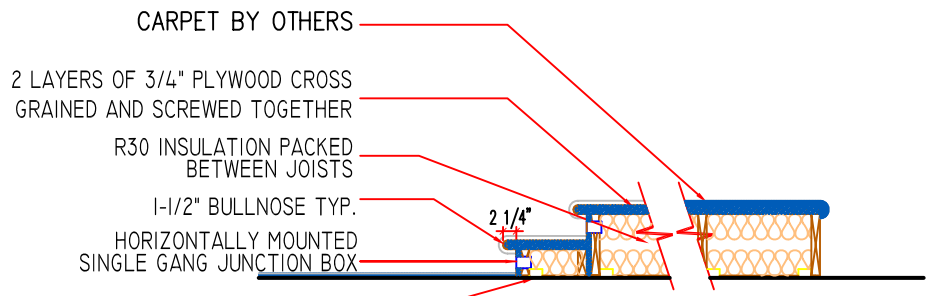
DATE:	01/10/07
DRAWN BY:	RPS
SCALE:	3/4" = 1'-0"
SHEET DESCRIPTION	
SIGHT LINES	
SHEET NO.	
IS - I	



① **TYPICAL STAGE DETAIL**
SCALE: 1"=1'-0"



③ **TYPICAL WALL TO CEILING DETAIL**
SCALE: 1"=1'-0"



② **TYPICAL PLATFORM DETAIL**
SCALE: 1/2"=1'-0"

REVISIONS	DATE	BY
GENERAL		

The Hyannisport Theater

Home Theater by Design

DATE:	01/10/07
DRAWN BY:	RPS
SCALE:	1/2" = 1'-0"
SHEET DESCRIPTION	
DETAILS	
SHEET NO.	
DE - I	